



Building a European Spatial Data Infrastructure: The Role of EuroGeographics

Richard Kirwan
President of EuroGeographics

Presentation overview

- EuroGeographics - the organisation
- EuroGeographics - strategy
 - Vision
 - Role & objectives
 - Action plan
- Key challenges

EuroGeographics



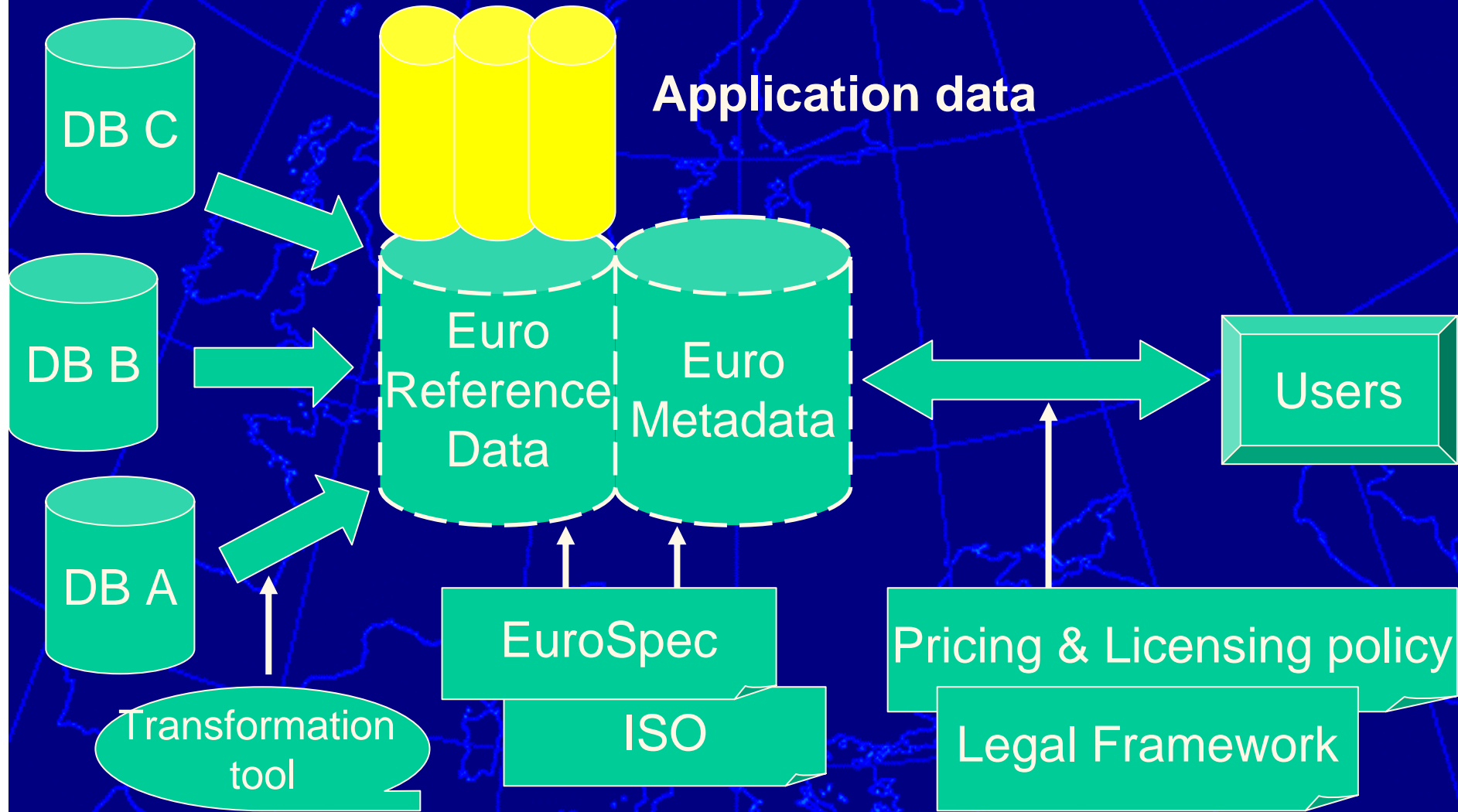
Vision

Achieve interoperability of European mapping
(and other GI) data within 10 years

Vision (for the user)

- **Easy to identify what data is available**
- **Confident that the data:**
 - conforms to known specifications and meets defined quality levels
 - is maintained at the most appropriate level
- **The terms & conditions under which the data can be used are clear and do not impede its use**
- **Tools available to combine data seamlessly**

Vision

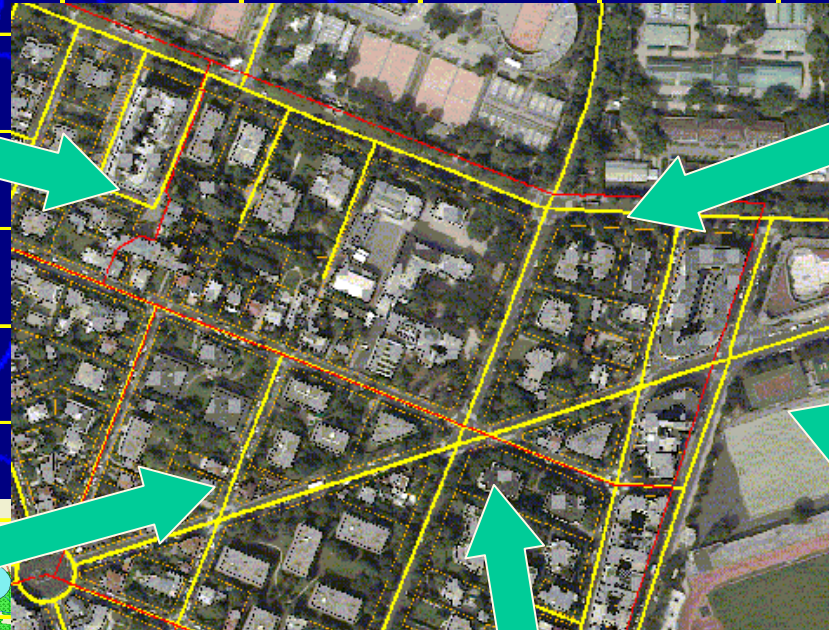


Reference data

Administrative units



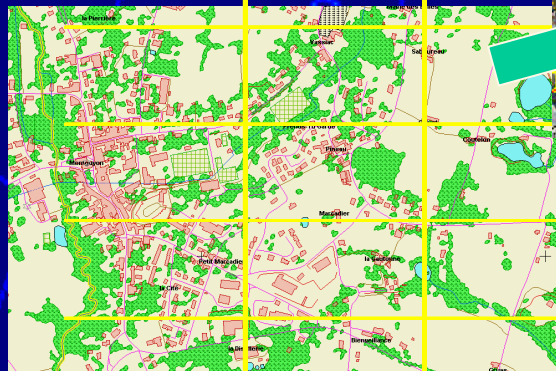
Geodetic reference system



Cadastral parcels

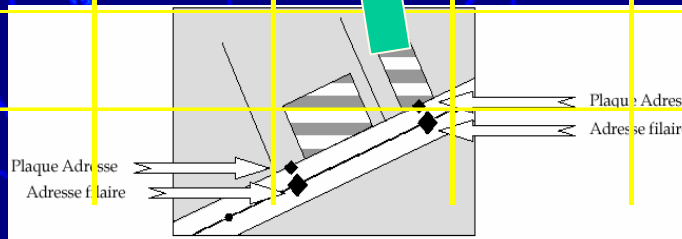


Orthoimagery



Topography

Addresses



Role of EuroGeographics

- **Coordinate & facilitate the creation of and access to reference data for Europe**
- **Focus on:**
 - Development of technical specifications for metadata & reference data
 - Implementation of the specifications
 - Pricing & licensing policies
 - Procedures & Processes
 - Partnerships
- **Focal point for the EC (and others) - the 'European Gateway' to Europe's National Mapping Agencies**

Objectives

- To promote and facilitate collaboration and best practice between members
- To promote the NMAs, their national and pan-European products & services and their leadership role in ESDI
- To provide harmonised metadata and reference data for Europe that meets customers' needs for quality, timeliness, ease of access and value for money
- To work in partnership with others to build the ESDI consistent with national and global SDIs

Presentation overview

- EuroGeographics - the organisation
- EuroGeographics - strategy
 - Vision
 - Role & objectives
 - Action plan
- Key challenges

Action plan - principles

- **Customer and business focused**
- **Step by step - 'think big, start small'**
- **Short term (next 2 years)**
 - improve access to existing data
 - create initial pan-European reference data
 - develop specifications, procedures & policies to support decentralised (distributed) vision of the future (the longer term)
- **Partnership**

ESDI – the framework

Metadata

- **GDDD Update**
- **New service**

Reference data

- Geodetic reference
- SABE Census
- EuroGlobalMap
- EuroRegionalMap
- **Euro Specifications**
- **Road data**
- **Height data**
- **Cadastral (WPLA)**

Organisation & Policy

- **Pricing & Licensing**
- **Public Sector Info**

INSPIRE WGs, GINIE (EUROGI)

Communication Plan

Business Improvement

GDDD Update

■ Objective:

- To improve quality of current metadata service to meet existing demand for information until new service is installed
- Discovery level metadata to improve access to existing data

■ Timescale:

- September 2002

www.eurogeographics.org

New Metadata Service

■ Objective:

- To implement a sustainable replacement for GDDD as a key part of the requirements for ESDI (INSPIRE)

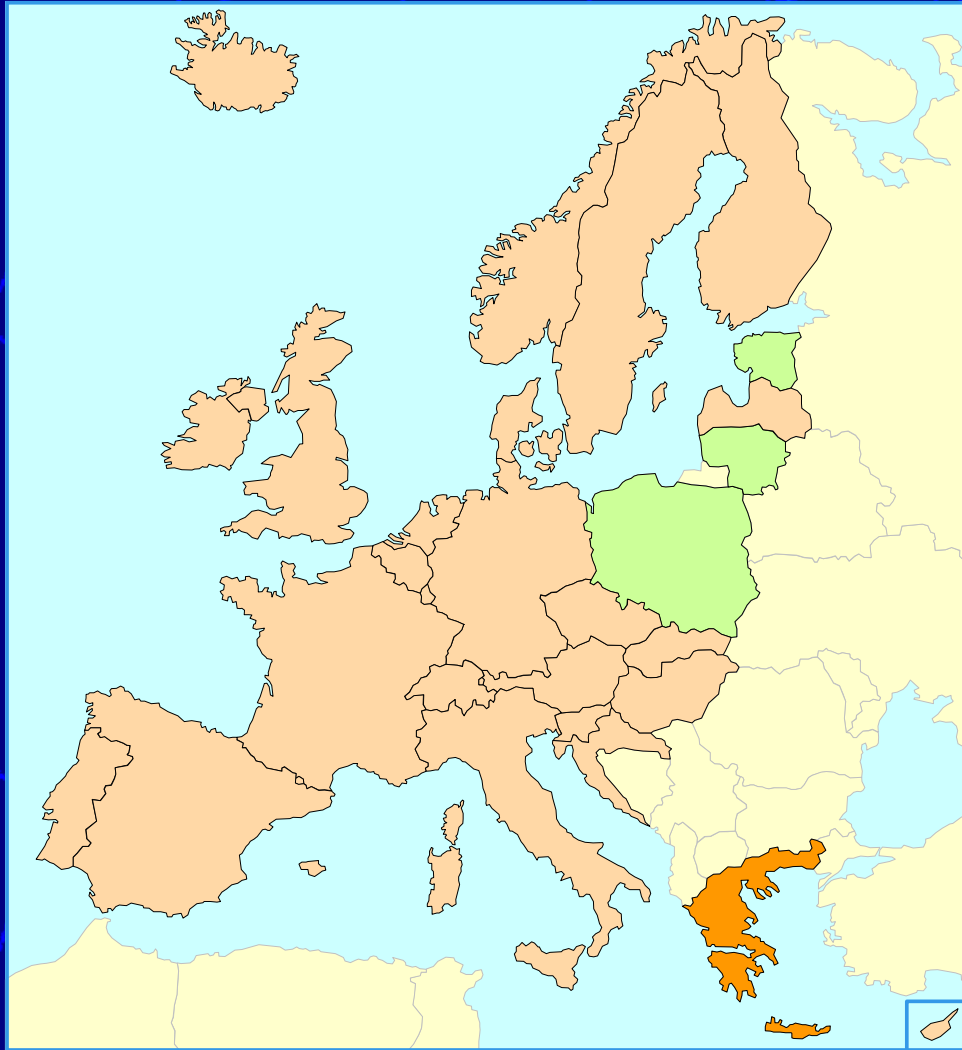
■ Timescale

- Summer 2003

New Metadata Service

- Discovery level service
- EuroGeographics profile based on ISO 19115
- Decentralised system allowing local maintenance of the data
- EuroGeographics (multi-lingual) “gateway”

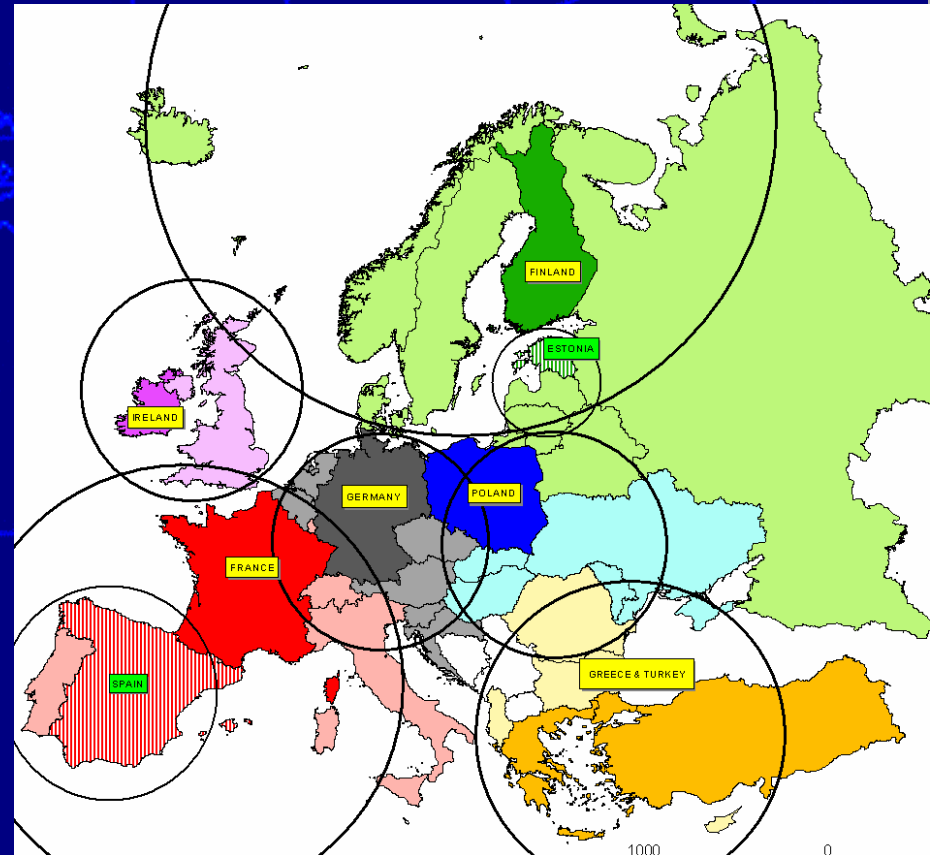
SABE: Administrative boundaries



- Centralised approach
- Common specification
- Standard pricing & licensing
- Time slice
(SABE91,95,97,2001)
- Coverage has evolved
from 25 to 30 to 38
- SABE2001 launch
autumn 2002

EuroGlobalMap

- Global (500k-1M) scale
- Network approach to creation through regional coordinators
- Target for delivery: Dec 2002 & Oct 2003
- Positive evaluation for co-funding through eContent programme



EuroRegionalMap

- Regional/national scale (100k~250k)
- Start small (6)
- Target date: October 2003
- The maintenance corresponds with production of national datasets
- Co-funded by EC through eContent programme



Future products

- Emphasis on solutions
- Decentralised approach
- Focus on specifications, process and interfaces
- Collaboration with other public and private sector organisations

EuroSpec (ISO Profile)

■ Objective:

- Develop an ISO profile for one theme of reference data

■ Key tasks:

- Review existing specifications
- Harmonisation of semantics

■ Timescale:

- Start July 2002; 12 months elapsed time

Road data

■ Objective:

- Develop a harmonised European road data solution

■ Key tasks:

- Specify user requirements
- Develop specification

■ Timescale:

- 12 months

Pricing & Licensing

■ Objective:

- Develop best practice guidelines for pricing & licensing

■ Key tasks:

- Review existing policies
- Identify components of policy
- Build consensus

■ Timescale:

- January 2003

Communication Plan

■ Objective:

- To put communication with EG members, our customers and partners at the forefront of Head Office activity

■ Timescale

- Develop & implement Phase 1 by end of 2002

EuroGeographics Best Practice

■ Objective:

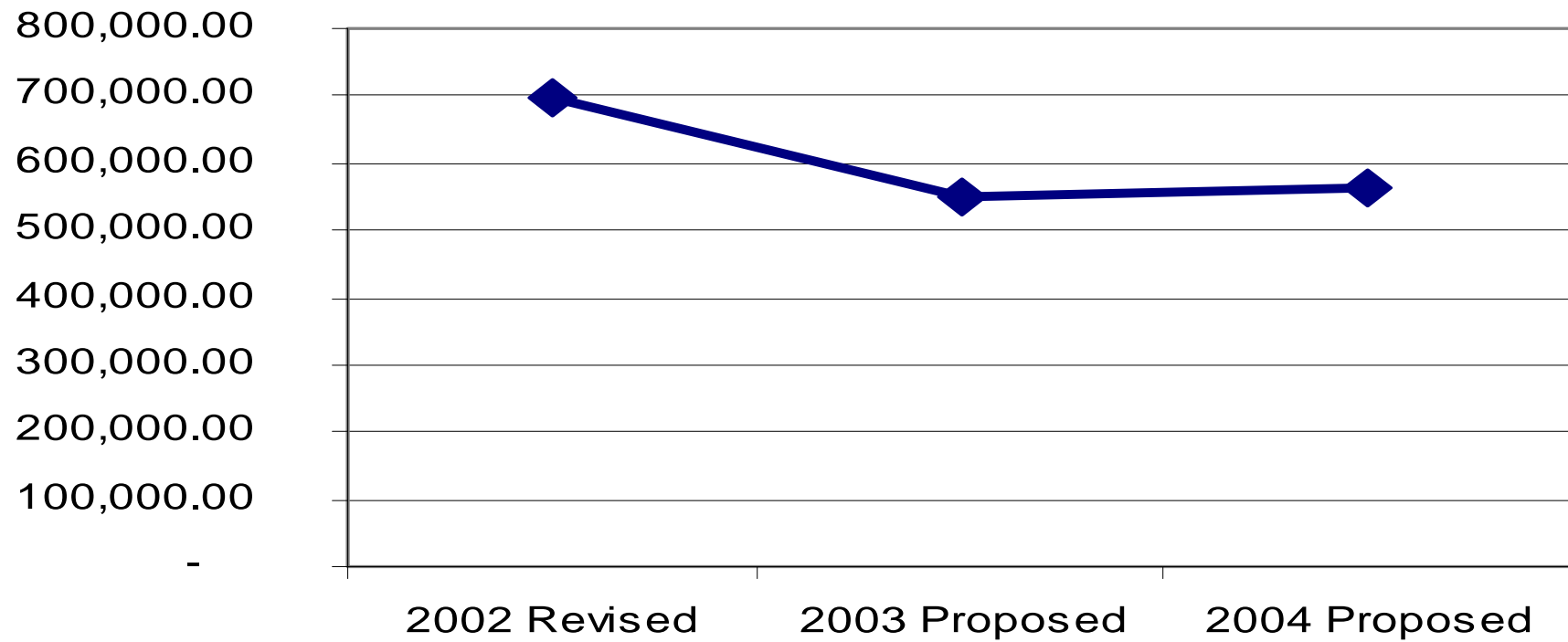
- Prepare best practice guidelines for programme & project management to allow efficient operation of a 'virtual' organisation

■ Timescale

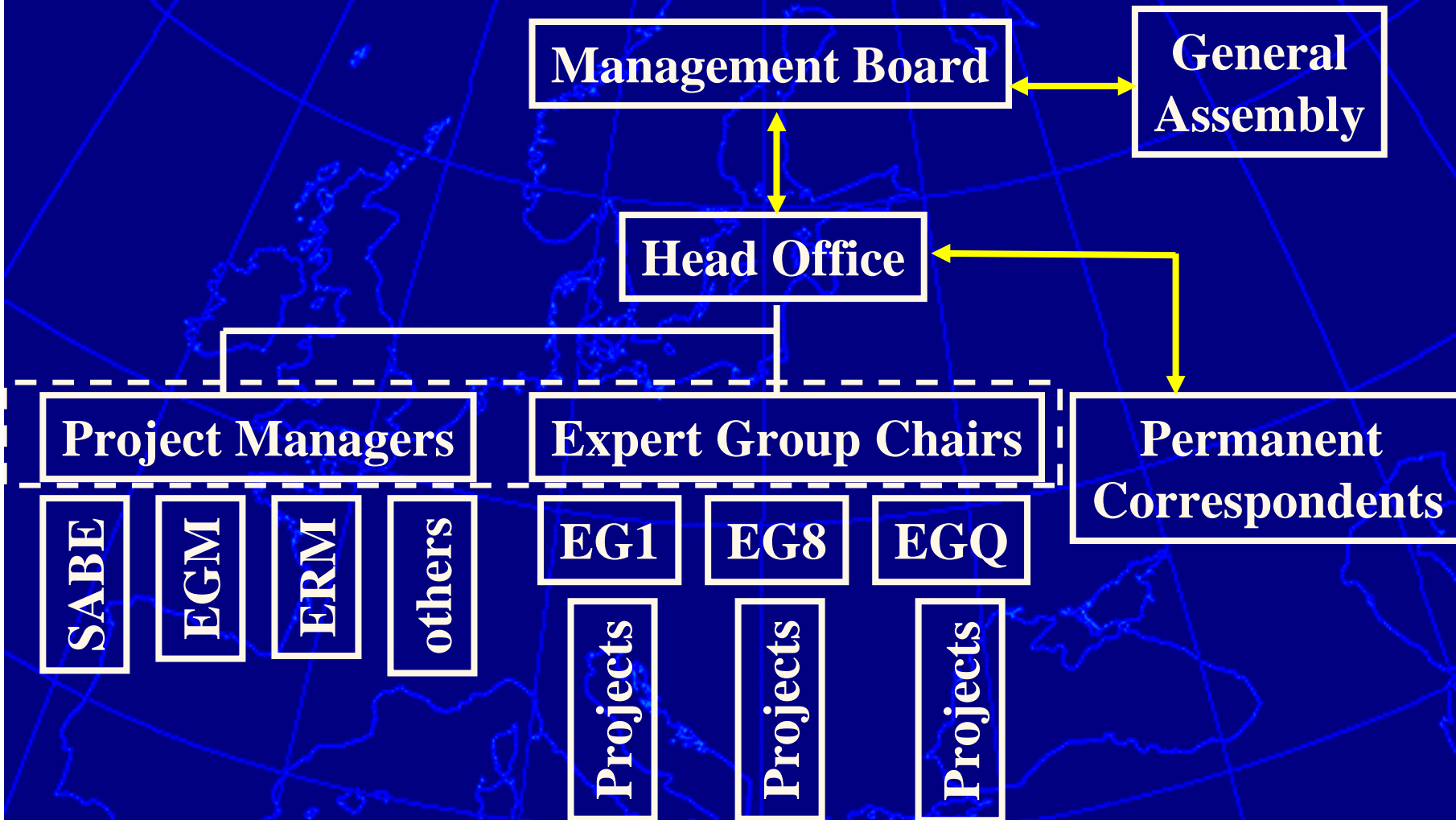
- 12 months elapsed time

Core Budget

COSTS



Organisation

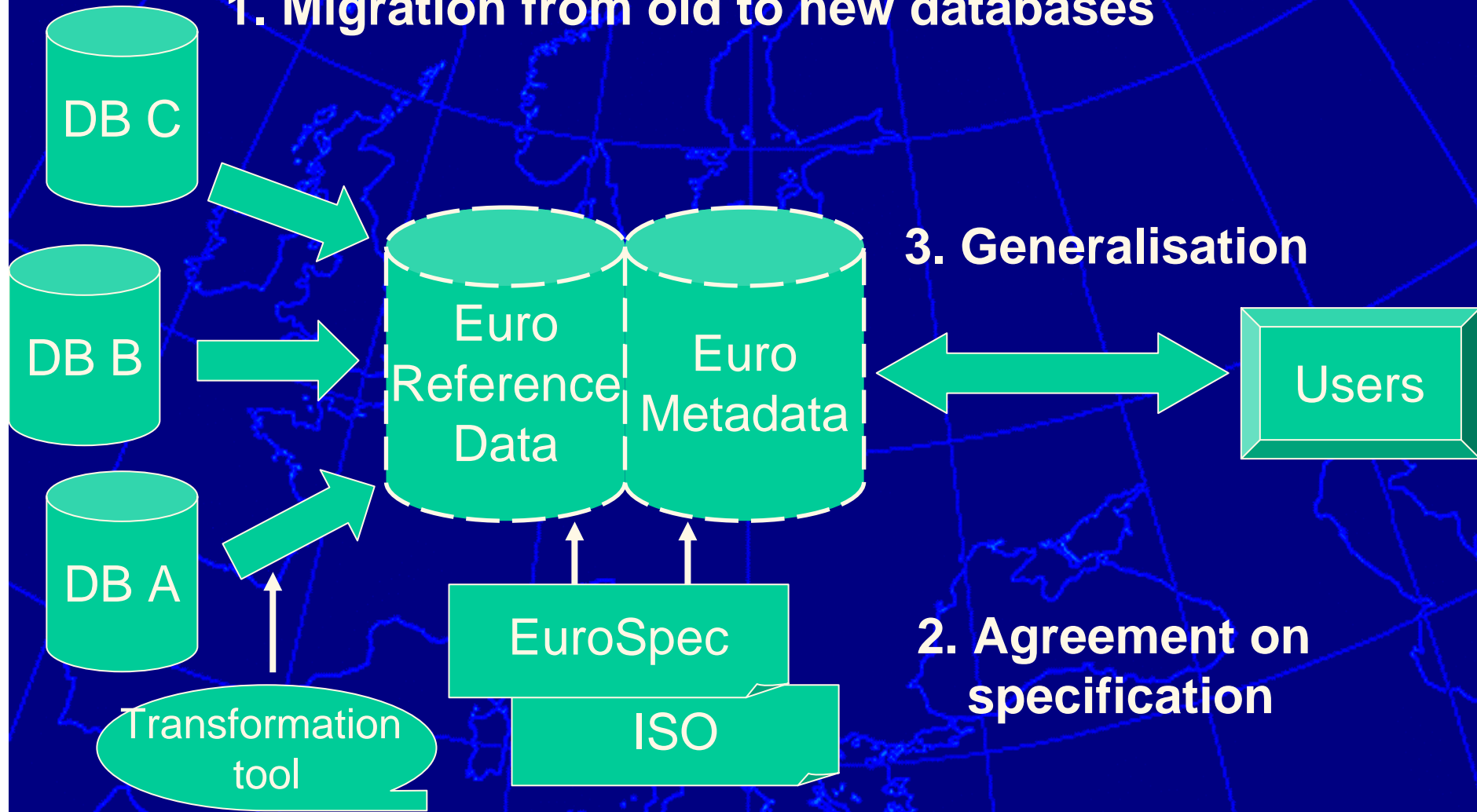


Presentation overview

- EuroGeographics - the organisation
- EuroGeographics - strategy
 - Vision
 - Role & objectives
 - Action plan
- Key challenges

Technical challenges

1. Migration from old to new databases



3. Generalisation

2. Agreement on specification

Institutional challenges

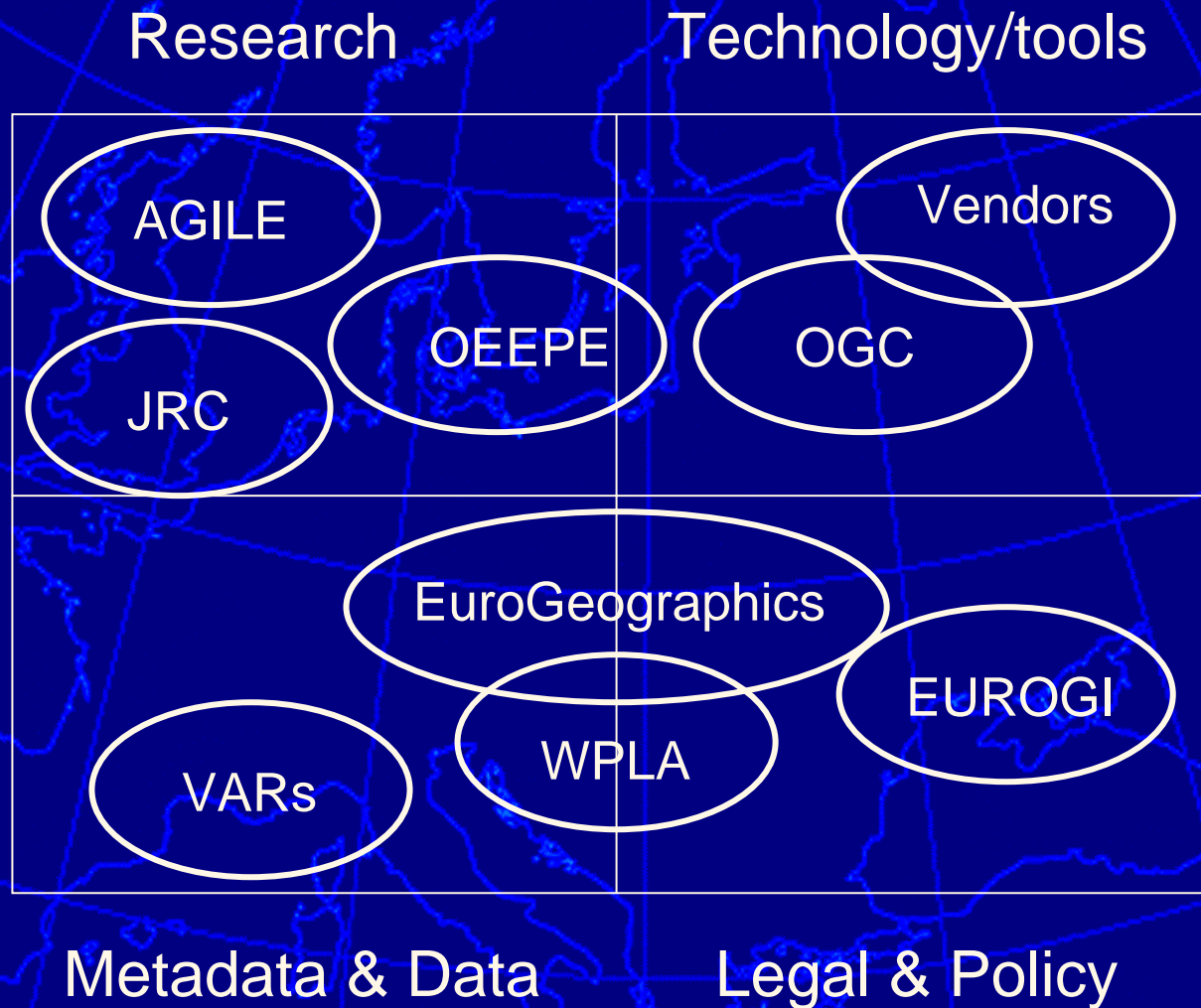
- User requirements
- Pricing & Licensing
- Public sector information
- Funding
- Timescales
- Organisational roles

User requirements

■ Difficult to translate into specification for reference data

- What themes and features?
- How to deal with semantic differences?
- What levels of currency and accuracy?
- Harmonised 'small scale' data sufficient?
- Require value for money, 'fit for purpose' data now!

GI Players - Partnership



Coordination

- **Important to link to EC initiatives**
 - Public sector information
 - INSPIRE
 - GMES
 - Directives e.g Water Framework
 - Meet GI requirements of different DGs

Conclusions

- EuroGeographics is committed to building Europe's Spatial Data Infrastructure in partnership with others
- Focus on:
 - Improved metadata service
 - Reference datasets
 - Specifications, policies and procedures to develop sustainable solutions
- The biggest challenges are 'institutional'
- Cadastral information is a key part of this infrastructure & the requirements for the cadastre should be included within existing organisational structures