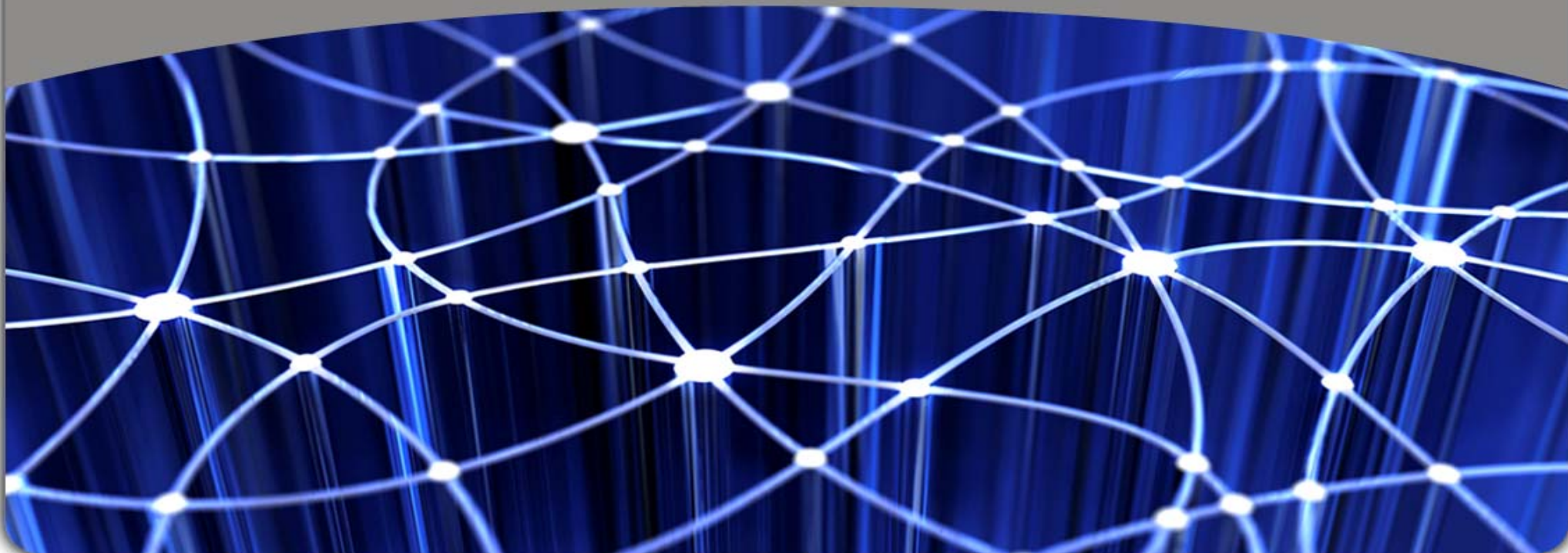


A white five-pointed star with a long tail pointing towards the top-left corner of the slide.

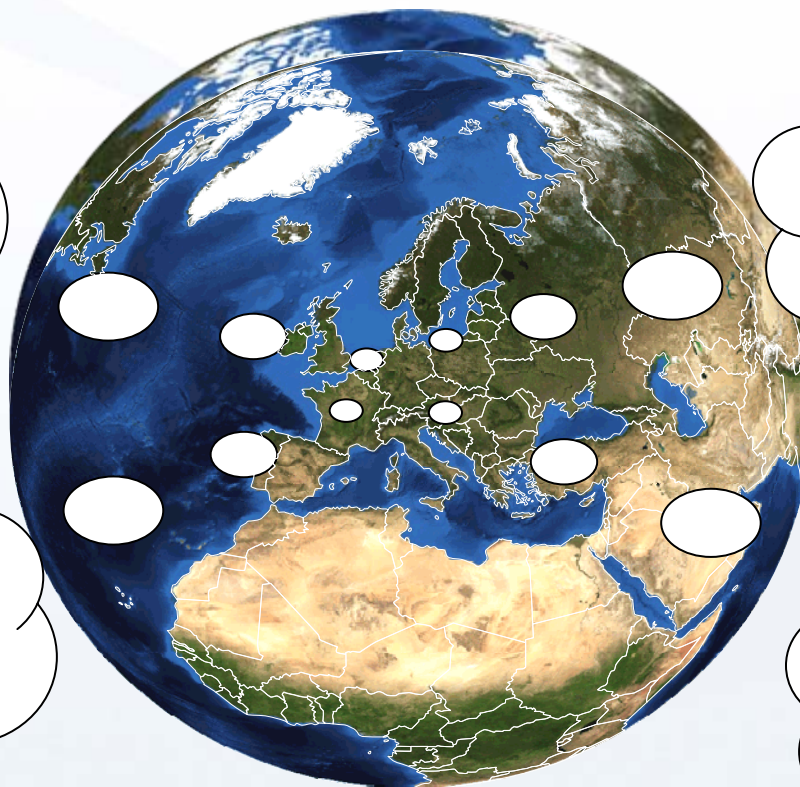
ESDIN – Putting the Cadastre on the map

Patricia Sokacova – EuroGeographics Communications Manager
December 2010



GMES (Global Monitoring for Environment and Security) is a European initiative for the implementation of information services dealing with **environment and security**

Communication from the Commission on **Shared Environmental Information System (SEIS)**
1st February 2008



Directive 2007/60/EC on the assessment and management of **flood risks** entered into force on 26 November 2007

Directive 2007/2/EC establishing an **Infrastructure for Spatial Information** in the European Community (INSPIRE) entered into force on the 15th May 2007

ESDIN project info (www.esdin.eu)

- Project partially funded by eContentplus programme
- Started in September 2008 and will run for 30 months until March 2011
- Coordinated by EuroGeographics with 20 project partners



ESDIN is delivering(1)

- Specifications – large, medium and small scales (INSPIRE+)
 - admin, transportation, geographical names, hydrography, cadastral parcels
- Transformation rules from EG/National spec to ELF specifications
- Quality Model and Metadata specifications
- Automation of Quality Evaluation
- Generalization rules



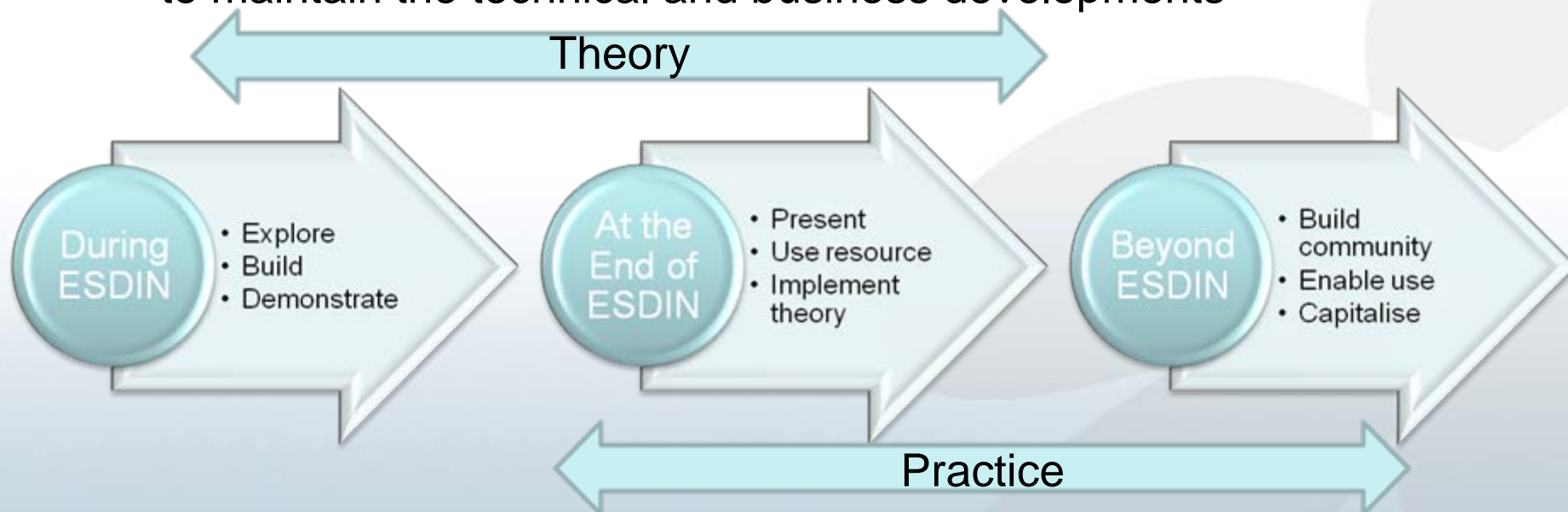
ESDIN is delivering(2)

- Authentication and security services
- Edge-matching rules and service description
- UID description
- Implementation of INSPIRE compliant download and viewing services
- Practical testing with key users
- Licensing principles



Conclusions (1)

- ESDIN on track
 - to achieve its objectives and
 - to meet the project partners' commitments
- Early preparations for the post project period required
 - to maintain the technical and business developments




Conclusions (2)

- ESDIN specifications offer the opportunity
 - to reduce costs of the maintaining our products and services,
 - to increase the range of our products and
 - to provide product and service improvements
- ESDIN building blocks provide
 - new framework for delivering pan-European and cross-border data to key users and other users
- NMCAs will maintain their leading role in the management of reference data and benefit on the shared use of services.


Actions speak louder than words



Content management Site building Site configuration User management Reports Help 1 / 1 Log out Dave Lovell



European Spatial Data Infrastructure Network

Co-funded by the European Union 


Search this site: Search

What's ESDIN? News & Events Project Deliverables Reference Groups Contact

News & Events

- News items
- Press releases
- Events

View Edit Track




News and Events

For the latest news, events information and press releases, please select the relevant section from the navigation buttons above.


Latest news & events

- 23 NOV** [ESDIN video on YouTube!](#)
Video on YouTube! We are proud to release our first public video of ESDIN! This one gives an overview of the project and the newly developed data viewer. It highlights how we are bringing geographic data from the official sources to make a harmonious "whole" for Europe.
- 11 NOV** [ESDIN Webinar for NMCAs: Unique Identifiers maintenance - don't miss the deadline](#)
for registration! Dear colleagues, dealing with Unique identifiers (UIDs) of national databases at large scale level and at medium/small scale level, we would like to present you the solutions for UIDs - created within the ESDIN project. If you want to learn more and...
- 8 NOV** [Plug fest - demonstration of Shibboleth usage for INSPIRE compliant services](#)
- take part on our virtual meeting! The ESDIN project, in collaboration with the OGC, would like to invite you to a webinar demonstrating the use of Shibboleth Federations to protect OGC Web Services (OWS) on Thursday 18th November 2010 at 14.00 GMT . An output from the OWS...

1 of 23 >>



EuroGeographics represents 55 National Mapping and Cadastral Agencies from 44 countries across Europe.



The European geographical information knowledge community.

Latest news

- 23 NOV** [ESDIN video on YouTube!](#)
Video on YouTube! We are proud to release our first public video of ESDIN! This one gives...
[More news](#)

Latest events

The current Location Framework for Europe

'Reference' data from Europe's National Mapping and Cadastral Agencies



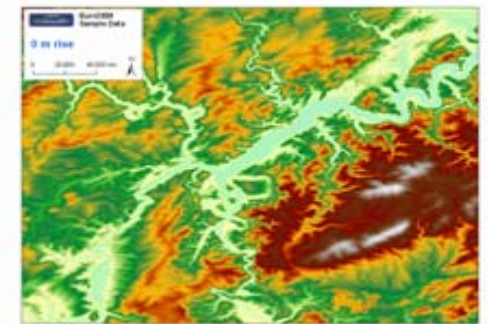
EuroBoundaryMap



EuroGlobalMap



EuroRegionalMap



EuroDEM

Together we are stronger



Thank you!