

sweden
2023.eu

LANTMÄTERIET

SUSANNE ÅS SIVBORG – DIRECTOR GENERAL AND CHIEF EXECUTIVE - LANTMÄTERIET
(THE SWEDISH MAPPING, CADASTRAL AND LAND REGISTRATION AUTHORITY)

LANTMÄTERIET



WE KNOW EVERY SINGLE PLACE IN SWEDEN

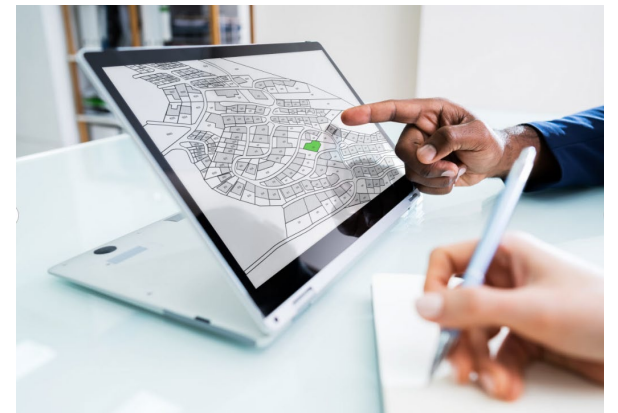
We know the width, height, length and transverse.

We map out reality, set boundaries and keep a check on who owns what.

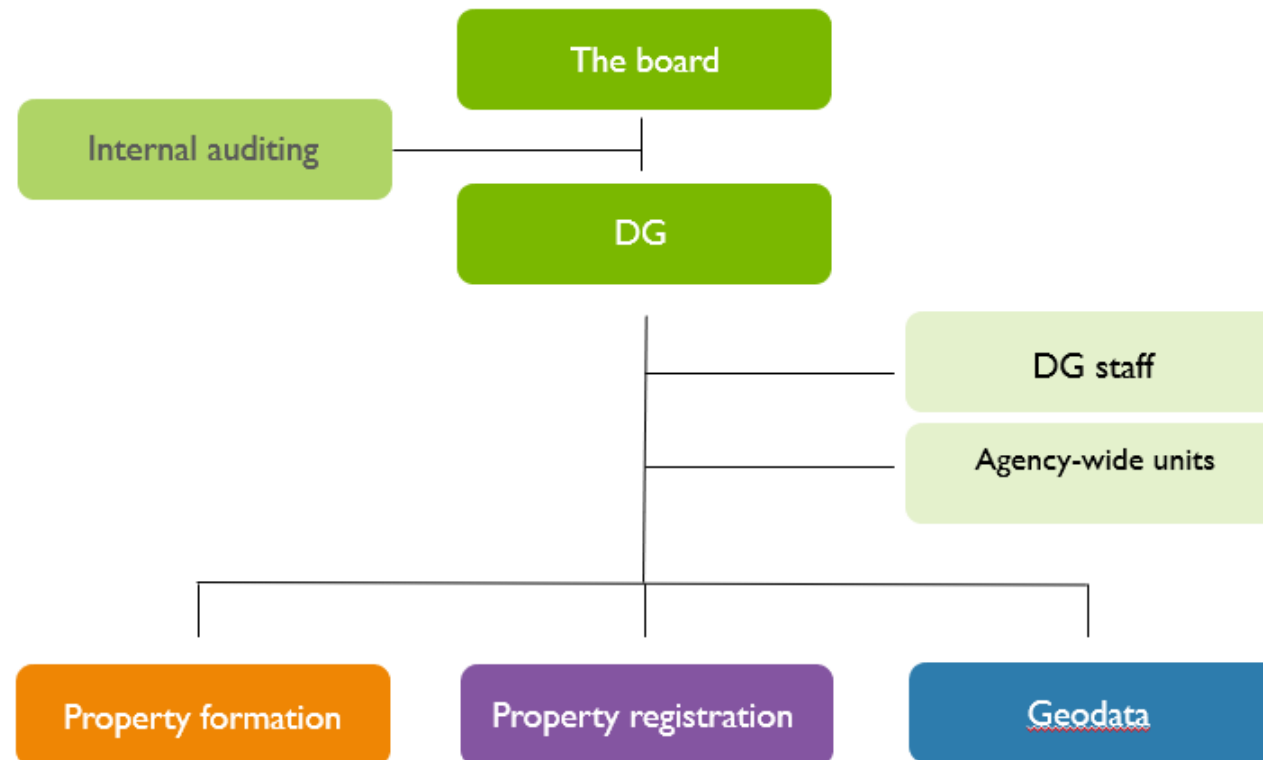


FACTS - LANTMÄTERIET

- We have mapped Sweden since 1628
- Belong to the Ministry of Rural Affairs and Infrastructure, Minister for Infrastructure and Housing, Andreas Carlsson
- General Director and Chief Executive, Susanne Ås Sivborg
- 70 percent of the income comes from fees, the rest is grant-financed
- 2,200 employees in 50 locations
- The head office is located in Gävle

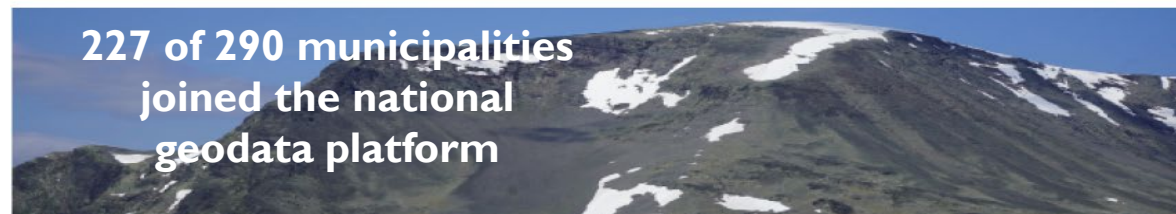


LANTMÄTERIET'S ORGANISATION



STATISTICS

Some statistics from 2022



MISSION AND TARGET AREAS FOR LANTMÄTERIET

OUR CORE PROCESSES



Cadastral Service Division

Responsible for property division. In other words, it makes decisions on new property units and making changes to existing boundaries.

The division is also responsible for making decisions concerning joint properties, easements and rights of way..



The Land Registration Division

Examines, makes decisions on and registers title transactions, mortgages, site leasehold rights and other rights that are then recorded in the Real Property Register. The division also makes decisions on and handle stamp duty and charges.



The Geodata Division

Collects, stores and update information about Sweden's geography and properties, and makes this information available to the general public, the public sector and the private sector.

LANTMÄTERIET'S MISSION

We secure the ownership of properties and make geodata available to the community.

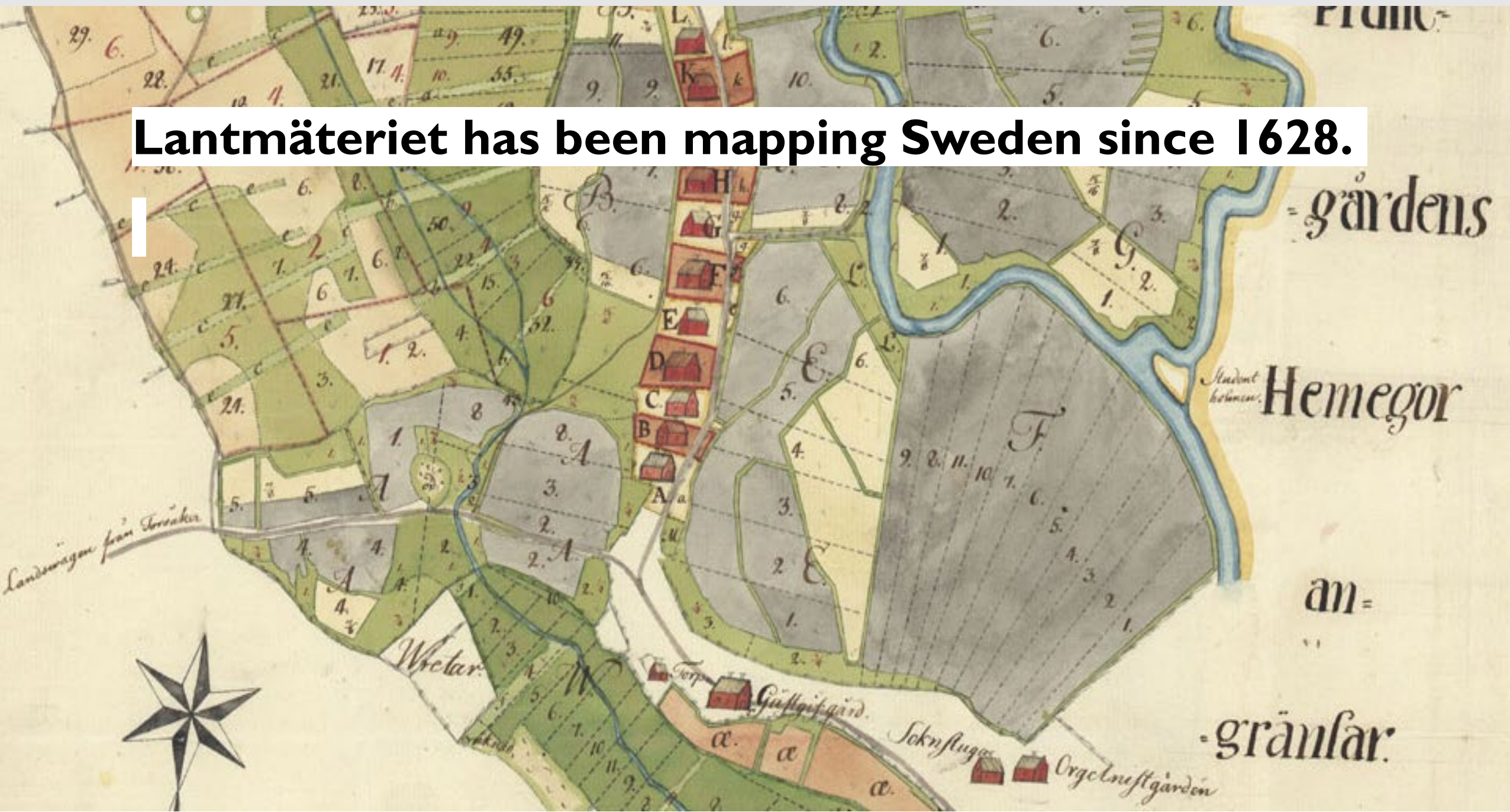
We take the lead in the digitalization of the community building process.



TARGET AREAS



Lantmäteriet has been mapping Sweden since 1628.



HIGH VALUE DATA AT LANTMÄTERIET

IMPACT OF HIGH VALUE DATA

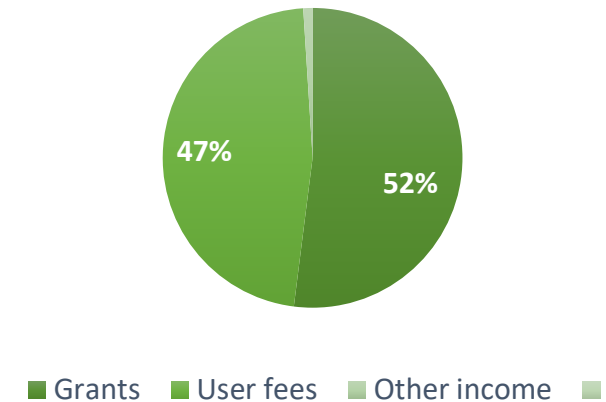
Current situation

- The least detailed geospatial information is already available as open data
- The more detailed data is available with a fee and licensing terms.

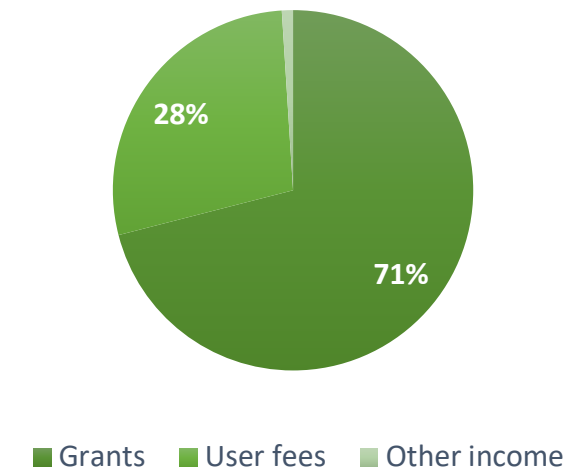
The coming situation

- HVD at Lantmäteriet includes Administrative units, Place names, Addresses, Buildings, Cadastral parcels, Hydrography, Land cover, Elevation and Ortoimagery. The property information and positioning service still financed with user fees
- HVD shall apply from June 2024
- To be able to implement these changes Lantmäteriet needs an increase of governmental funding to compensate for the loss of user fees. Worth around 165 MSEK (15 mEuro)

Financing of geospatial information today



Financing after HVD



THE SWEDISH NATIONAL GEODATA STRATEGY FOR 2021-2025

SUSTAINABLE URBAN DEVELOPMENT

Geodata is the base for a sustainable urban development. It gives people, businesses, flora and fauna the possibility to exist together.



SMART RURAL AREAS

Smart rural areas take advantage of the possibilities that digitalization offers for economic, social and environmental development. With smart rural areas come a demand for open, useable and accessible geodata.



CLIMATIZATION

Access to current and reliable geodata is a foundation for as well short term as long-term decisions in order to adapt Sweden to a changing climate.



A SECURE AND ROBUST SOCIETY

A secure and robust society has the ability to prevent and a resistance to accidents, crises and wars through an efficient crises' preparedness and a well-functioning total defense. Current and unitary geodata are the foundation for this work.



GOALS OF THE SWEDISH NATIONAL GEODATA STRATEGY FOR 2021-2025

In order for public geodata to benefit society in the best possible way they need to be user friendly and available. This demands not only appropriate financing solutions but also a well-functioning cooperation between the actors in the field.

Use and benefit in society

- Geodata are open**
- Geodata are usable**
- Geodata are available**
- A well-developed cooperation**

HOW DOES LANTMÄTERIET CONTRIBUTE TO A SUSTAINABLE SOCIETY?

- Nationwide height model
- Laser scanning of Swedish forests
- Nationwide aerial photographs
- National coverage of continuous operating GNSS reference stations (positioning and navigation)
- Mapping of the coastline together with the Swedish Maritime Administration
- Catchment areas together with Swedish Meteorological and Hydrological Institute
- Responsible for Swedish implementation of Inspire and contacts with EU
- Contribute to Agenda 2030
- Coordinating the work regarding a more efficient national planning and building process.



LANTMÄTERIET AND CRIME ENFORCEMENT

CRIME ENFORCEMENT – A GOVERNMENT ASSIGNMENT

All changes regarding property transactions in Sweden

- both changes in division of land (property formation) and
- property transfers (land book registration)

are managed within Lantmäteriet's Information systems.



That gives us the technical conditions to monitor not only day to day operations but also transactions that could indicate criminal activities eg. money laundering.

Today crime enforcement is not within Lantmäteriet's assignment.

Lantmäteriet has been given a government assignment to describe what activities Lantmäteriet could carry out with changed technical and legal conditions. The assignment will be reported by end of May

THANK YOU FOR YOUR ATTENTION

